

π

Say Hello to π(Pi).

Be intrigued by 'π' - the revolutionary 'on-device AI' payment solution that's not just fast, it's futuristic. π knows your customers like no one else, ensuring a shopping experience that's not just hassle-free, but delightfully intuitive.

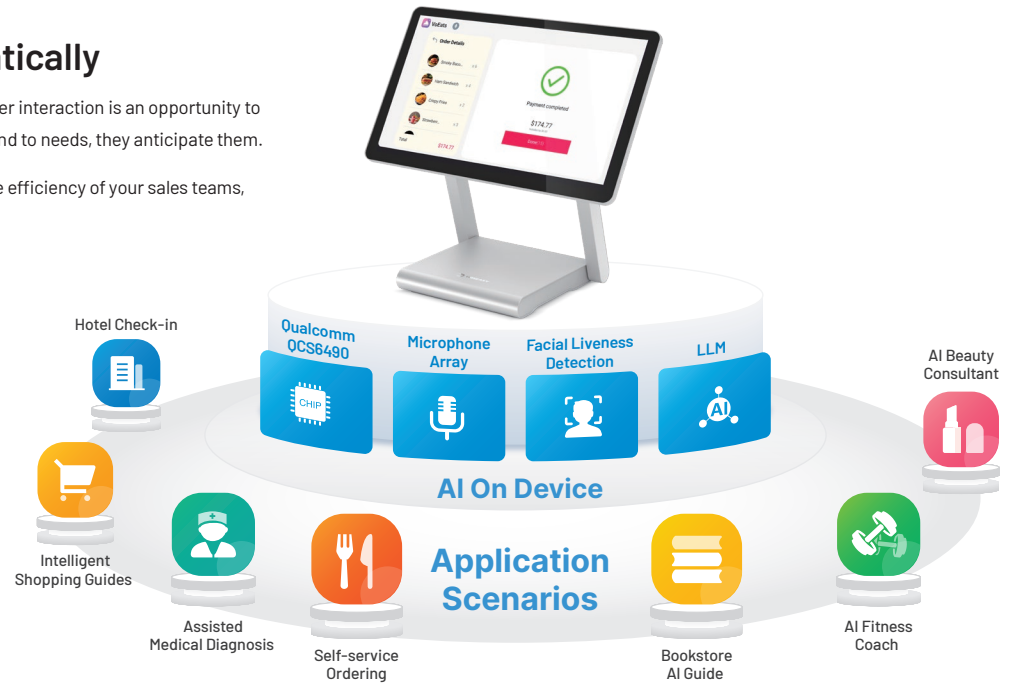
AI Transforms Business Scenarios Dramatically

Prepare to dazzle and delight like never before. Imagine a future where every customer interaction is an opportunity to astound, empowered with predictive product recommendations that don't just respond to needs, they anticipate them.

Boost your in-store sales to soaring heights, as our innovative solutions transform the efficiency of your sales teams, turning every engagement into a masterstroke of customer satisfaction.



- Next-gen AI voice recognition (ASR), to deliver 'Intelligent recommendations' for F&B orders and products
- Identifying facial features, enhancing identity verification and increasing security



Elegantly designed by Wiseasy and powered by the cutting-edge Qualcomm QCS 6490, π is more than a payment solution; it's your gateway to an unparalleled customer journey.

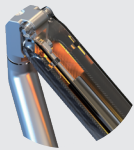


- Incorporates a high-performance core, of up to **2.7 GHz**, ensuring a higher performance compared to other IoT chipsets.
- Powerful AI engine with fused AI accelerator architecture, up to **12 trillion** operations per second, with enhanced data processing capability.
- Manufactured with a **6 nm** process, it delivers lower power consumption, and lasts longer.



Designed to last when it matters most

Engineered for endurance, its sleek carbon-fibre shell is shock-resistant and withstands the hustle and bustle of dynamic environments like retail and F&B. It's the tough yet elegant solution for high-interaction spaces.



Low Power Consumption

Low power consumption, as a result of specially curated components.



Quantum Dot Screen for enhanced advertising displays

Say goodbye to the mundane hues of traditional LCD displays and embrace a world where colors are not just seen, they're experienced. Transform your display screens from mere advertisements to mesmerizing experiences.



Flexible Mounting options



Desktop mount to enhance space utilization

Offers increased flexibility in business operations, and improves the efficiency of store operations.



Collapsible Metal Stand

All-metal body, high-end and stylish. Folds easily for convenient storage and transport. Supports the addition of a secondary screen for advertising display, order content presentation, enhancing the overall image of the store.

Technical Specifications



Model Name
PI010



Operating System
Android 13



CPU
Octa-Core, 2.7GHz



Memory
6GB LPDDR4x + 128GB eMMC
Optional: 8GB LPDDR4x +
256GB eMMC



Display
15.6 inch 16:9 FHD, 60Hz
Capacitive touch screen with
oleophobic coating, 10-point
touch



WIFI
2.4G/5G/6G, IEEE802.11 ax



Bluetooth
Bluetooth5.2, BLE



Camera
Front Camera: 2MP duo camera,
RGB+IR



Audio
Duo Speaker: 2W
Mic: 4 unit microphone array



Button
Power button



Peripheral Ports
1*USB-C 3.1, 3*USB-A 2.0,
1*RJ45, 1*RJ12



Weight
1400g (main unit)



Size (L*W*H)
383*222*12.5mm (main unit)



Environment
Storage temperature:
-20°C to 60°C
Operating temperature:
-10°C to 55°C
Humidity: ≤95%



Accessories
Secondary EMV display: T2 with
dock, connect with USB cable



Certifications
FCC / CE