



WISEASY

Cashier Box1

Safe, Intelligent, Compact and Elegant!



Safe



Bluetooth



Counterfeit
money detector



Key

WISEASY TECHNOLOGY PTE. LTD.

www.wiseasy.com

mk@wiseasy.com

Headquarters: 70 Anson Road, #18-02, Hub Synergy Point, Singapore 079905

China Office: 27th Floor, Air China Tower, No. 36 Xiaoyun Road, Chaoyang District, Beijing 100027, China

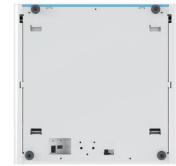
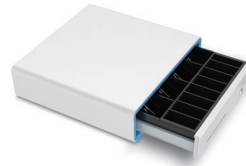
US Office: 185 Great Neck Rd, Ste 422, Great Neck, New York 11021, United States

Follow us on:





Product Introduction



Cashier Box1 can be used in combination with WISEASY T1, WISEASY P3 and other Wiseasy series products, and can also be used independently as a separate component.

01

Compact, containable and space-saving

02

Bluetooth control the opening state of Cashier Box1 to ensure cash security

03

Robust design stands against abrasion, corrosion with strong security performance

04

With 3-position lock, Cashier Box1 can be easily opened with a physical key without electricity



Product Specifications

| Items | Specification |
|-----------------------------|---|
| Dimensions | 100×355×345 mm |
| Coin Placer | four Rows, Movable Black Coin Placer 4 / Wallet Type Arc-type: Steel Wire Wallet |
| BT | BT4.0+BLE |
| Electromagnetic Lock | Model (Type No.) HS-0837L-1A12DC12V/Plug-in Type |
| Cable Joint | 6P6C Crystal Head |
| Connection Type | Bluetooth 4.0 |
| Micro switch | Yes |
| Drawer | 0.6/SECC iron, Deep Dark(PT1.4 BLACK C) plastic Liner |
| Panel | White (PT: COOL CRALY 1C) Plastic Panel with one cheque entrance |
| Bottom plate | (0.8/SECC) 330A (0.8/SECC), Wired with 330AT Block, Bluetooth Driver and Mounting Bracket |
| Packing List | Cashier Box1 Machine / 1.8m USB Cable / 5V2A Adapter Warranty Paper / Manual |