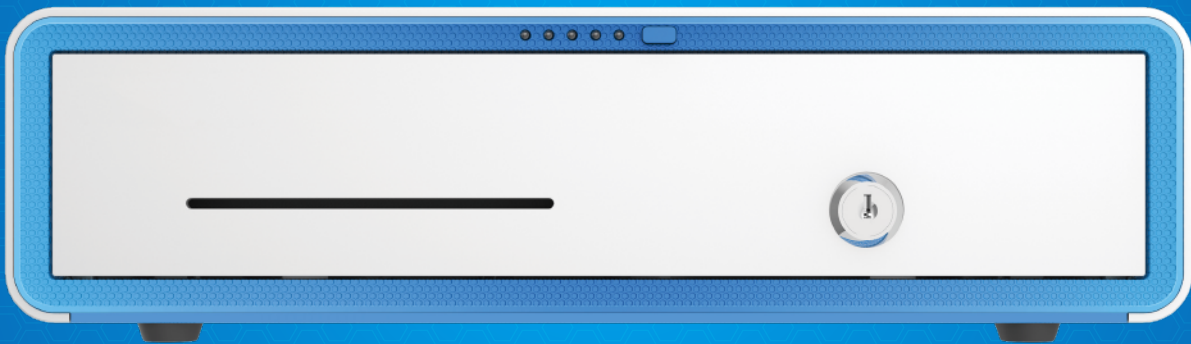




Cashier Box1

Safe, Intelligent, Compact and Elegant!



Safe



Bluetooth



Counterfeit
money detector

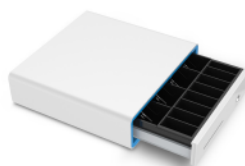
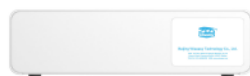


Key





Product Introduction



Cashier Box1 can be used in combination with WISEASY T1, WISEASY P3 and other Wiseasy series products, and can also be used independently as a separate component.

01

Compact, containable and space-saving

02

Bluetooth control the opening state of Cashier Box1 to ensure cash security

03

Robust design stands against abrasion, corrosion with strong security performance

04

With 3-position lock, Cashier Box1 can be easily opened with a physical key without electricity



Product Specifications

Items	Specification
Dimensions	100×355×345 mm
Coin Placer	four Rows, Movable Black Coin Placer 4 / Wallet Type Arc-type: Steel Wire Wallet
BT	BT4.0+BLE
Electromagnetic Lock	Model (Type No.) HS-0837L-1A12DC12V/Plug-in Type
Cable Joint	6P6C Crystal Head
Connection Type	Bluetooth 4.0
Micro switch	Yes
Drawer	0.6/SECC iron, Deep Dark(PT1.4 BLACK C) plastic Liner
Panel	White (PT: COOL CRALY 1C) Plastic Panel with one cheque entrance
Bottom plate	(0.8/SECC) 330A (0.8/SECC), Wired with 330AT Block, Bluetooth Driver and Mounting Bracket
Packing List	Cashier Box1 Machine / 1.8m USB Cable / 5V2A Adapter Warranty Paper / Manual