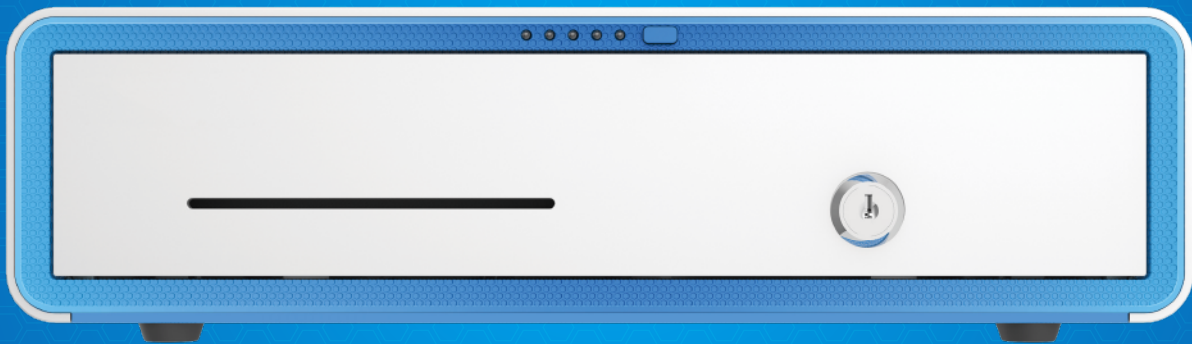




# Cashier Box1

Safe, Intelligent, Compact and Elegant!



Safe



Bluetooth



Counterfeit  
money detector

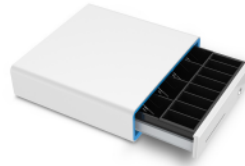
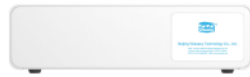


Key





## Product Introduction



Cashier Box1 can be used in combination with WISEASY T1, WISEASY P3 and other Wiseasy series products, and can also be used independently as a separate component.

01

Compact, containable and space-saving

02

Bluetooth control the opening state of Cashier Box1 to ensure cash security

03

Robust design stands against abrasion, corrosion with strong security performance

04

With 3-position lock, Cashier Box1 can be easily opened with a physical key without electricity



## Product Specifications

Items	Specification
Dimensions	100×355×345 mm
Coin Placer	four Rows, Movable Black Coin Placer 4 / Wallet Type Arc-type: Steel Wire Wallet
BT	BT4.0+BLE
Electromagnetic Lock	Model (Type No.) HS-0837L-1A12DC12V/Plug-in Type
Cable Joint	6P6C Crystal Head
Connection Type	Bluetooth 4.0
Micro switch	Yes
Drawer	0.6/SECC iron, Deep Dark(PT1.4 BLACK C) plastic Liner
Panel	White (PT: COOL CRALY 1C) Plastic Panel with one cheque entrance
Bottom plate	(0.8/SECC) 330A (0.8/SECC), Wired with 330AT Block, Bluetooth Driver and Mounting Bracket
Packing List	Cashier Box1 Machine / 1.8m USB Cable / 5V2A Adapter Warranty Paper / Manual